

Gdańsk case study:

## Hevelianum Centre and Spa House (Dom Zdrojowy)

as an example for managing "difficult"  
existing infrastructure in the city

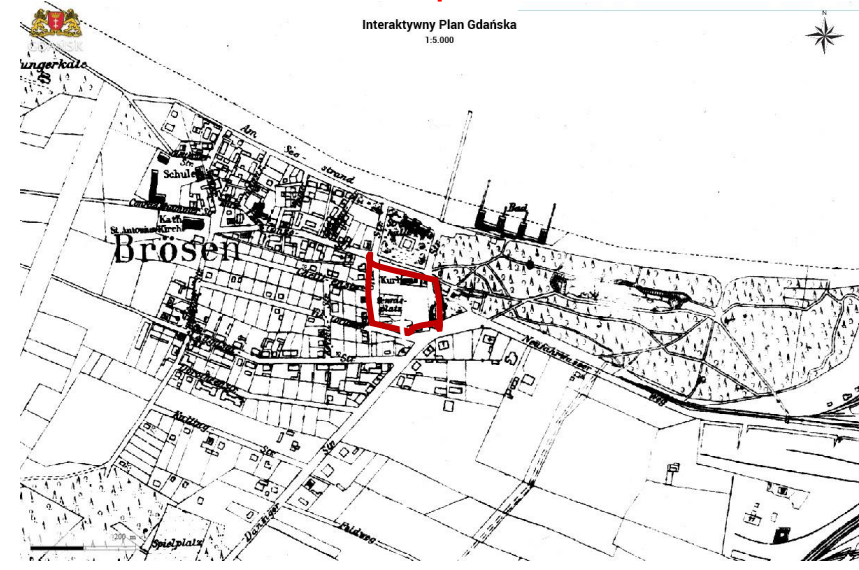
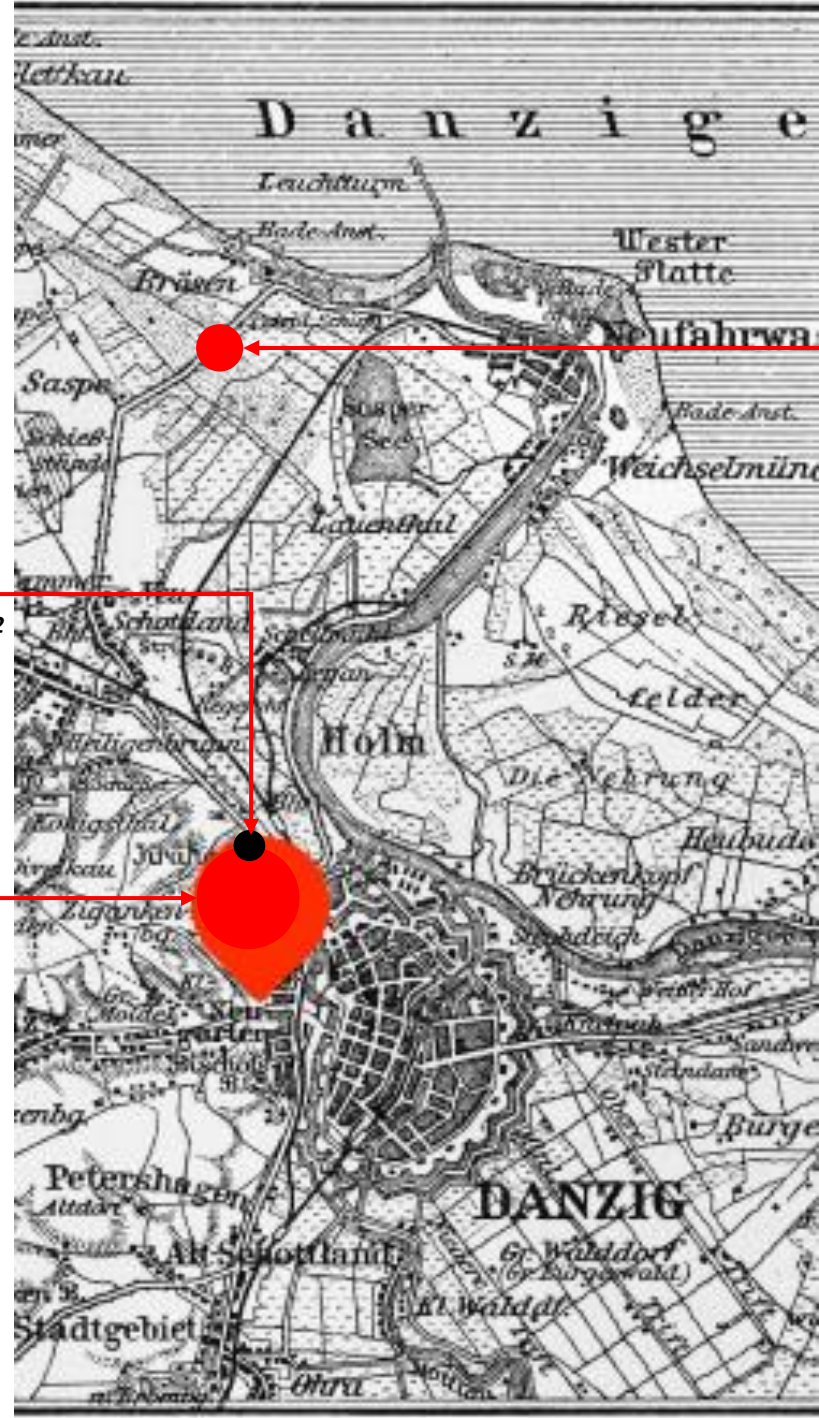
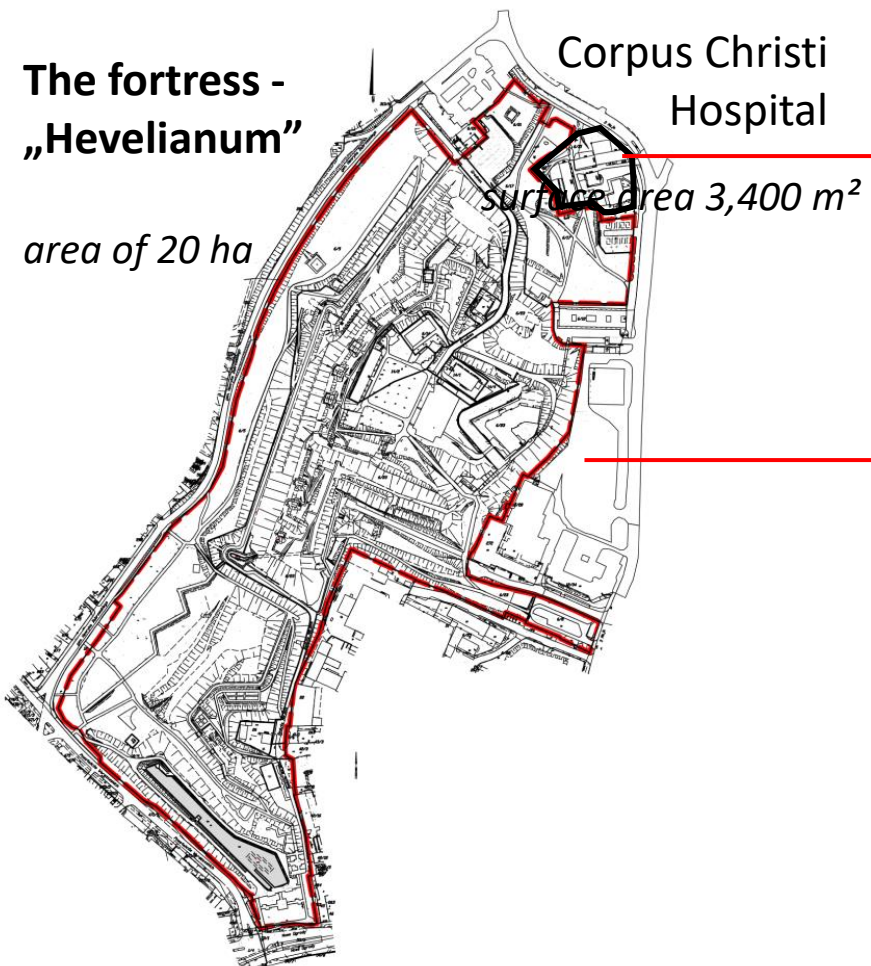
Dr. eng. arch. Anna Gołędzinowska  
City Councillor



Source: [hevelianum.pl](http://hevelianum.pl)

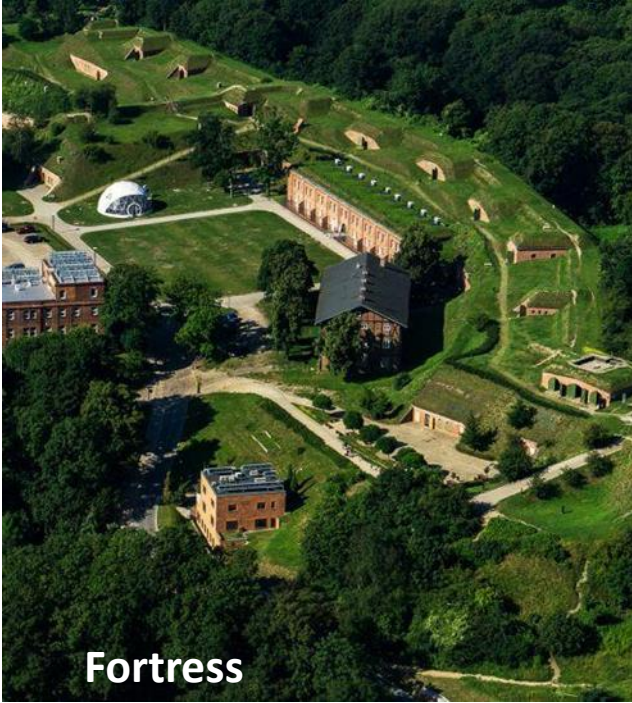
# Locations

The fortress -  
„Hevelianum”  
area of 20 ha



Spa House (Dom Zdrojowy)  
usable area is 1,670 m<sup>2</sup>

# History



**Fortress**

As early as the beginning of the 16th century, historians believed that it was here where the oldest fortified town was located, which in time was transformed into a city.

The preserved historic defensive buildings date mainly from between 1867 and 1874.

## Spa House (Dom Zdrojowy)

The Spa House was built in a spa park in 1893, on the site of the former Kurhaus, which had burned down.

It was built as a three-box building on a rectangular plan, with a representative central part, two symmetrical side wings and wooden verandas.

Around 1900, the building of the Spa House was enlarged, adding an eclectic brick building to its eastern side, significantly different architecturally from the homogeneous décor of the main building.



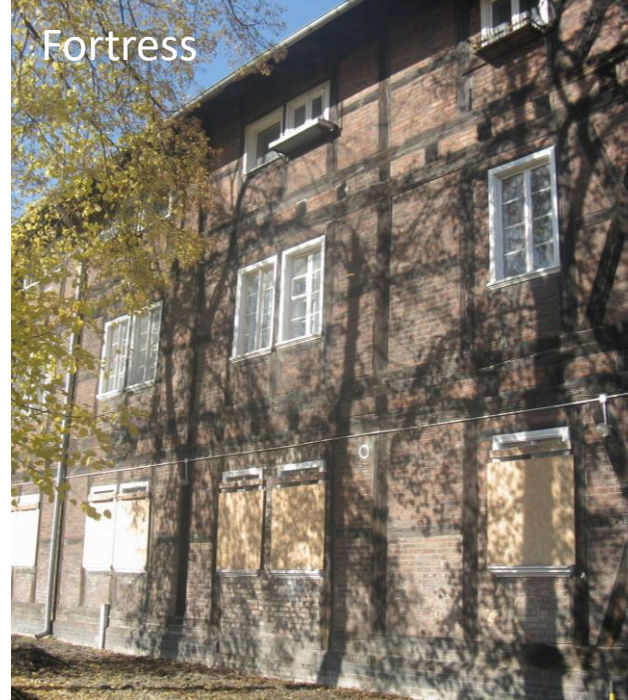
Source: Gedanopedia



**Corpus Christi Hospital**

An example of a medieval hospital complex, extended in the 18th and 19th centuries. It was first mentioned in records of 1380.

Originally, it was intended for lepers and, as such, placed outside the walls of the medieval town. Then, it served as a shelter for the poor, the old, and the sick.

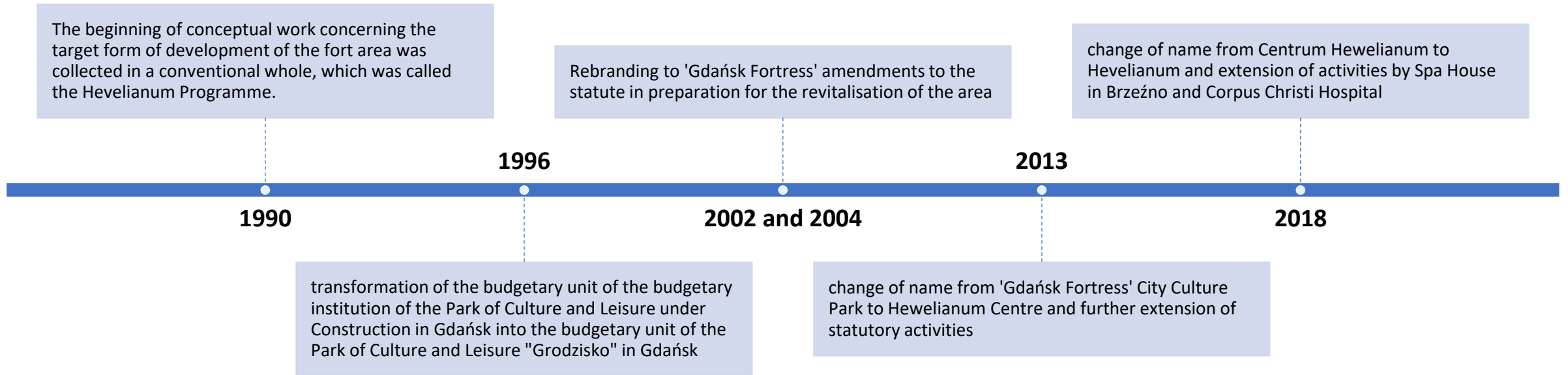


## Three locations - common problem

Each of the areas mentioned had outdated communal housing in houses of difficult-to-adapt half-timbered construction.

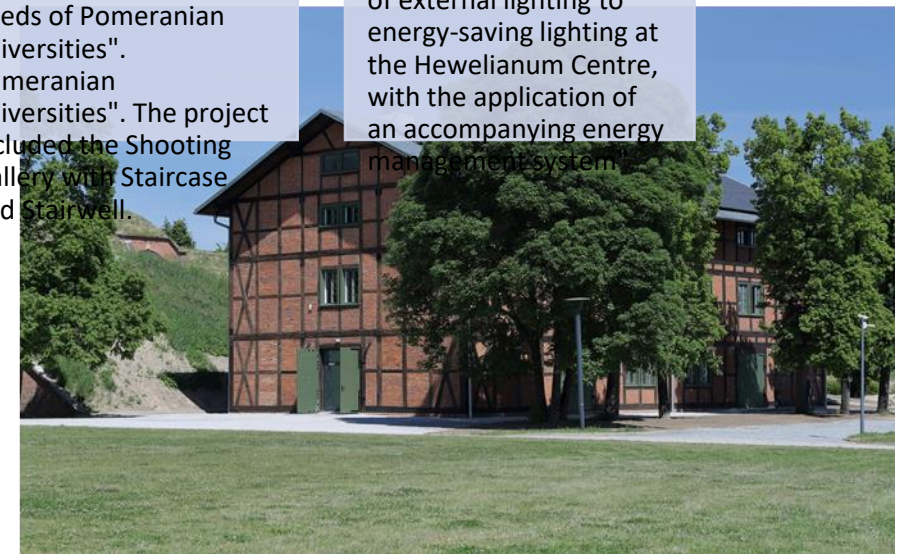
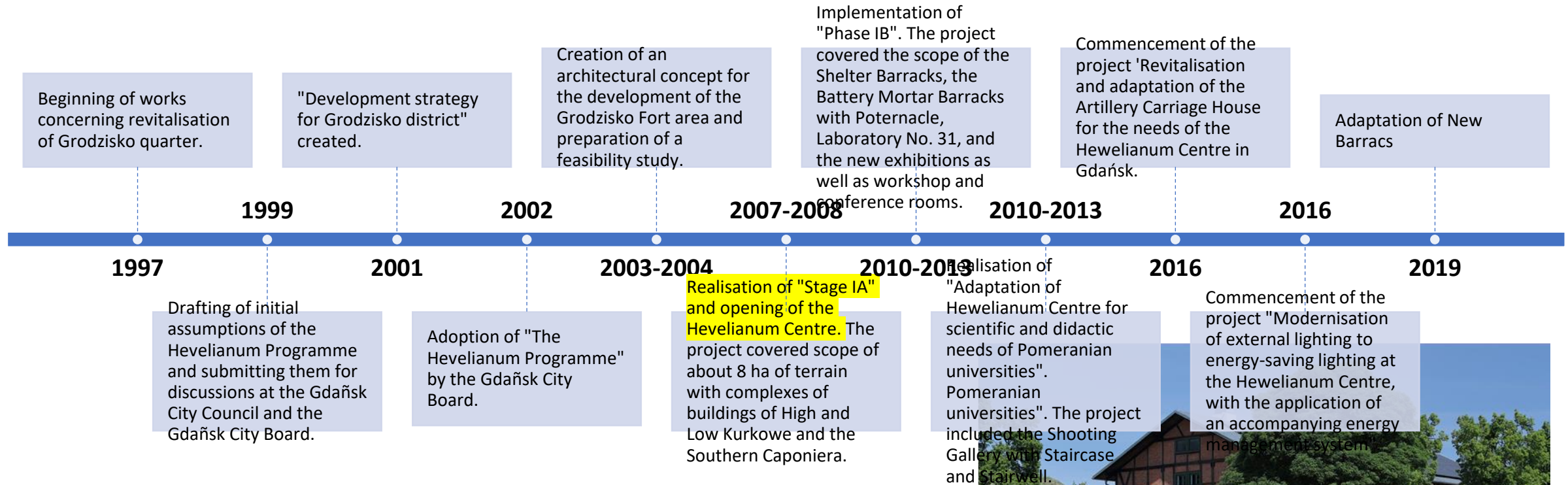


# Transformation and development of the institution - timeframe



HEVELIANUM

# Hevelianum - Timeframe

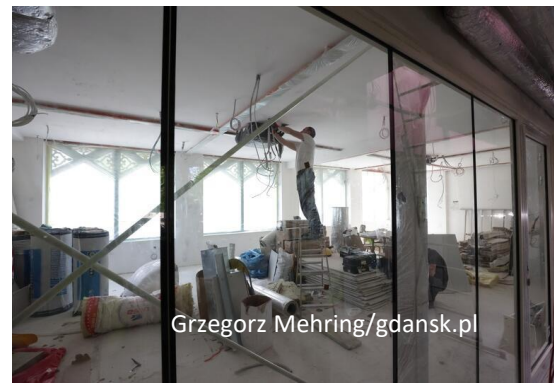
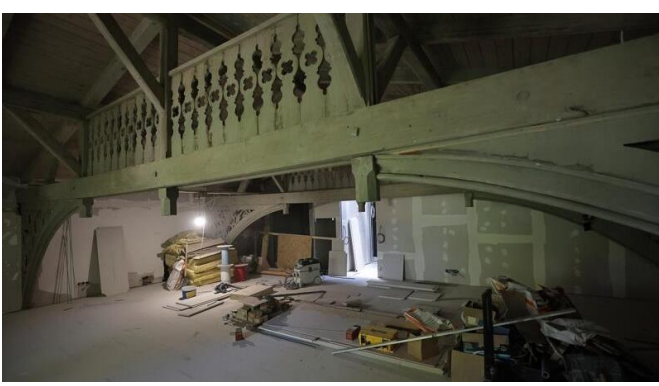




# Spa House – the idea

The idea behind the Spa House was a place whose main goal would be to educate and popularise general ecology as the answer to the difficult challenges of today's world.

Climate change, increasing environmental pollution, loss of natural biodiversity, measures to protect the Baltic Sea and its ecosystems, and rational waste management (circular) are all challenges that we have to deal with every day as a global population.







Fot. Grzegorz Mehring/gdansk.pl

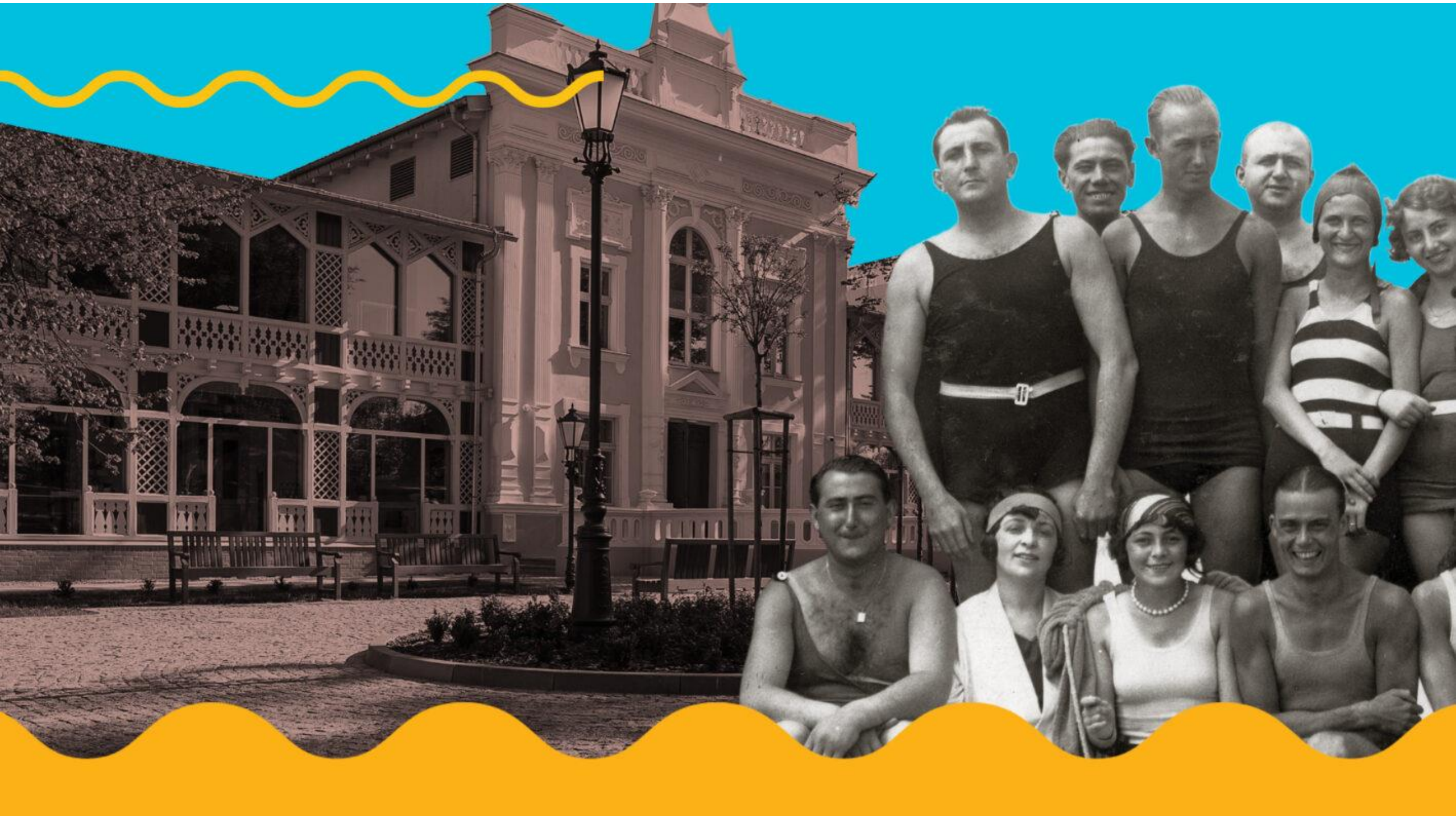


Source: Hevelianum

# The Spa House (Dom Zdrojowy)

- The City of Gdansk signed the contract for the redevelopment and change of use of the Spa House in June 2019 (works completed in 2021)
- The Spa House has, among other things, public workshop and lecture rooms, accommodation rooms, a common lounge area, and a restaurant with a seasonal menu.
- This is a reference to the menus of the former Spa House, but also to the new programme, which includes the popularisation of knowledge and social responsibility in the field of environmental protection.





# Corpus Christi Hospital



# Next steps

- Hevelianum continues to undertake various activities, such as to revitalise the Spa House in Brzeźno and adapt it for educational purposes, and alter the former Corpus Christi Hospital Complex, located at the foot of Gradowa Hill, for exhibition purposes.
- In accordance with the new statute, the mission of the Hevelianum is also to popularise the achievements of Johannes Hevelius and to promote health.



Anna Gołędzinowska  
Anna.goledzinowska@rada.gdansk.pl

RODZAJE ORGANIZACJI PRZESTRZENI: I N

- zabudowa grzebietowa
- zabudowa kwartałowa
- zabudowa liniowa
- układ centralny
- dysharmonia w tkance miejskiej
- przestrzeń nieuporządkowana
- rytm
- otwarcia widokowe
- główna oś

ANALIZA WYNIKOWA: I N

- miejsca skupiające ludzi
- miejsca „do obudzenia”
- ścieżka do miejsc skupiających ludzi
- ścieżka miejsc „do obudzenia”
- węzły urbanistyczne

Projekt: Natalia Wołoszyk i Magdalena Zygadlińska



Thank you!

Anna Gołędzinowska

[anna.goledzinowska@rada.gdansk.pl](mailto:anna.goledzinowska@rada.gdansk.pl)